



IVANHOE CENTRAL SCHOOL

NEWS

Phone: 02 6995 1108

Email: ivanhoe-c.school@det.nsw.edu.au



Caring, Confident and Respectful Learners

Dear Parents, Carers and Community

I hope you have all had a wonderful long weekend, and I particularly hope everyone had an opportunity to share some special time with family, and perhaps even a little bit of a sleep in.

I would like to thank the parents for your care in ensuring your children come to school in complete school uniform so consistently. We hit some particularly cold weather this week, and a couple of children left their school jumpers or jackets at home. I would like to ensure you that we take every care possible of your children, and if they haven't got a jumper we lend them a school jumper for the day, or in the case of students who have worn another jumper to school, I understand that with the colder weather it takes longer for clothing to dry. It's better to send your child to school warm, than not send your child to school at all.

UPDATE STUDENTS HEALTH PLAN

Medical issues change from year to year and it is essential that we have the most updated information to care for your children.

I would appreciate it if all parents and carers could send an updated medical form and Doctor's Plan for Asthma, Anaphylaxis or other allergies, if needed. Please provide Health Plan to Mrs Jones or Mrs McGinty. Thank you.

UP AND COMING ATHLETIC CARNIVAL

We are looking for offers of help to assist with the Primary and Secondary Athletics Carnival held on Thursday the 21 June from 1.00pm. Whether you cook, volunteer your time for an event- your time will be greatly appreciated.

My door is and always has been open – whether you are happy, sad or even mad.

Have a lovely Week
Patricia Sharp - Principal

DIARY DATES TERM 2

Week 8– Short Week

Up & Coming Events

18 June 18, Monday:

Ms Sharp - Professional learning

19 June 18, Tuesday:

HUB Play group from
10.00 to 12.00pm BER room

20 June 18, Wednesday:

HUB Play group from
10.00 to 12.00pm BER room

21 June 18, Thursday:

1.00pm Athletic
Carnival, school
oval

\$5.00 Sausage /rissole lunch will be
available

22 June 18, Friday: RDO

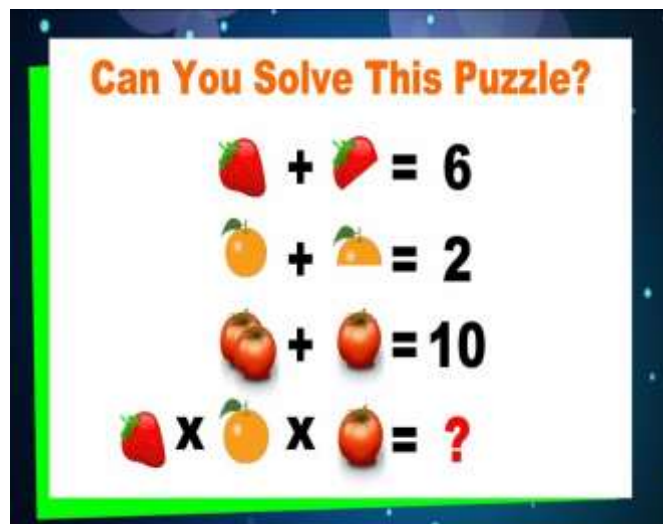
This week a riddle from Ms Sharp,

The Merchant

A merchant can place 8 large boxes or 10 small boxes into a carton for shipping.

In one shipment, he sent a total of 96 boxes. If there are more large boxes than small boxes,

how many cartons did he ship?



HAPPY BIRTHDAY TO:



**JULLIAN COULTHARD
CELEBRATING ON 15TH JUNE**

**WILLIAM CLARK CELEBRATING ON
20TH JUNE.**



LIBRARY

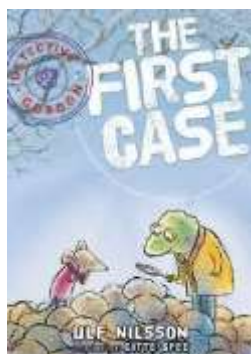
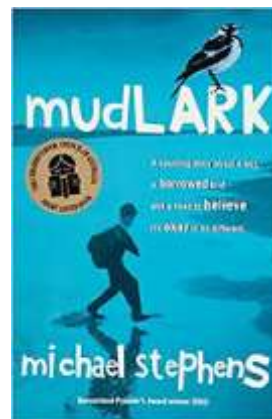
‘Mudlark’ written by Michael Stephens.

Jim’s father had warned him not to enter his mother’s room when the door was closed.

‘She’s sleeping. She needs a lot of sleep, to recover from her operation.’

Jim moved his fingers to the handle. He had to see her. If she was asleep, he would simply tiptoe out again, and no harm would have been done. If she was awake he would tell her about

Jim Liddell is different from other boys his age. He lives in the world of his imagination. At home, things are different too. His mother is confined to her bed and there are empty pizza boxes stacked up beside the kitchen sink. On the last week-end before the end of term, Jim gets to take home the class pet, a rescued mudlark, named Mudlark. Jim’s life is about to change forever.



‘The First Case’ written by Ulf Nilsson. *Someone’s stealing the squirrel’s nuts, and it’s up to Detective Gordon to catch the thief.* Unfortunately, solving this crime means standing in the snow and waiting for a long time...If only he had an assistant—someone small, fast, and clever—to help solve this terrible case. Then Detective Gordon would be able to go back to doing what he’s best at: thinking, eating cakes, drinking tea, and stamping important papers.

Head lice

What are head lice?

Head lice are tiny insect parasites that live on the human head, feeding on the scalp several times a day. Head lice reproduce by laying their eggs (nits) on the hair shaft close to the scalp. They are not dangerous, don't carry diseases and are not a sign of poor hygiene.

How are head lice spread?

Head lice are spread by head-to-head contact with another person who has head lice, e.g. when doing group work at school, playing, or hugging. Head lice can run from one head to another in seconds. Head lice are not spread through bed linen, Eggs ('nits') do not fall off until weeks after they have hatched as the egg shells are glued tightly to the hair shaft.

What are the signs of head lice?

The scalp may itch as the skin reacts to the saliva of the head lice. Itchiness can take weeks to develop. If you have had head lice more than once, the skin may become desensitised and there may be little or no itch. Crawling head lice may be seen in the hair, Hatchlings (young lice) are often a lighter brown and about 1 to 2 mm long. Eggs (nits) may be seen attached to the hair shaft but they may be very tiny and hard to see, especially newly-laid eggs close to the scalp. method that best suits you and your family.

For successful removal of head lice, be sure to follow the directions for your preferred choice of product

Prevention

Useful activities and ideas to help prevent infestation:

- check your child's hair regularly for head lice and eggs ('nits') – use a metal fine tooth 'nit' comb and plenty of hair conditioner applied to the dry hair, to make the task easier and more effective.

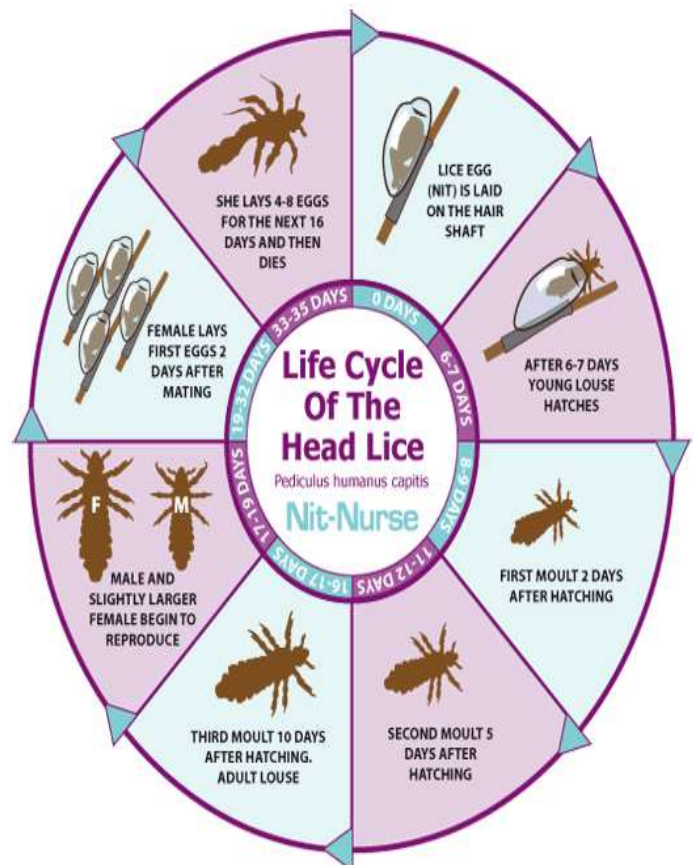
- > **tie long hair back** – braid and/or put it up if possible.

- > **consider applying hair gel or mousse**

- these do not prevent or repel lice but may help to keep stray hair

- > **avoid sharing combs or brushes.**

- > **remind your child** to avoid head-to-head contact with other children





Compulsory School Attendance

Information for parents

Education for your child is important and regular attendance at school is essential for your child to achieve their educational best and increase their career and life options. NSW public schools work in partnership with parents to encourage and support regular attendance of children and young people. When your child attends school every day, learning becomes easier and your child will build and maintain friendships with other children.

What are my legal responsibilities?

Education in New South Wales is compulsory for all children between the ages of six years and below the minimum school leaving age. The *Education Act 1990* requires that parents ensure their children of compulsory school age are enrolled at, and regularly attend school, or, are registered with the Board of Studies, Teaching and Educational Standards for homeschooling.

Once enrolled, children are required to attend school each day it is open for students.

The importance of arriving on time

Arriving at school and class on time:

- Ensures that students do not miss out on important learning activities scheduled early in the day
- Helps students learn the importance of punctuality and routine
- Give students time to greet their friends before class
- Reduces classroom disruption

Lateness is recorded as a partial absence and must be explained by parents.

What if my child has to be away from school?

On occasion, your child may need to be absent from school. Justified reasons for student absences may include:

- being sick, or having an infectious disease
- having an unavoidable medical appointment
- being required to attend a recognised religious holiday
- exceptional or urgent family circumstance (e.g. attending a funeral)

Following an absence from school you must ensure that within 7 days you provide your child's school with a verbal or written explanation for the absence. However, if the school has not received an explanation from you within 2 days, the school may contact you to discuss the absence.

Principals may decline to accept an explanation that you have provided if they do not believe the absence is in the best interest of your child. In these circumstances your child's absence would be recorded as unjustified. When this happens the principal will discuss their decision with you and the reasons why.

Principals may request medical certificates or other documentation when frequent or long term absences are explained as being due to illness. Principals may also seek parental permission to speak with medical specialists to obtain information to collaboratively develop a health care plan to support your child. If the request is denied, the principal can record the absences as unjustified.

Travel

Families are encouraged to travel during school holidays. If travel during school term is necessary, discuss this with your child's school principal. An *Application for Extended Leave* may need to be completed. Absences relating to travel will be marked as leave on the roll and therefore contribute to your child's total absences for the year.

In some circumstances students may be eligible to enrol in distance education for travel periods over 50 school days. This should be discussed with your child's school principal.





My child won't go to school. What should I do?

You should contact the principal as soon as possible to discuss the issue and ask for help. Strategies to help improve attendance may include a referral to the school's learning and support team or linking your child with appropriate support networks. The principal may seek further support from the Home School Liaison Program to develop an Attendance Improvement Plan.

What might happen if my child continues to have unacceptable absences?

It is important to understand that the Department of Education and Communities may be required to take further action where children of compulsory school age have recurring numbers of unexplained or unjustified absences from school.

Some of the following actions may be undertaken:

- Compulsory Schooling Conferences

You may be asked, along with your child, to attend a Compulsory Schooling Conference. The conference will help to identify the supports your child may need to have in place so they attend school regularly. The school, parents and agencies will work together to develop an agreed plan (known as Undertakings) to support your child's attendance at school.

- Application to the Children's Court – Compulsory Schooling Order

If your child's attendance at school remains unsatisfactory the Department

may apply to the Children's Court for a *Compulsory Schooling Order*. The Children's Court magistrate may order a Compulsory Schooling Conference to be convened.

- Prosecution in the Local Court

School and Department staff remain committed to working in partnership with you to address the issues which are preventing your child's full participation at school. In circumstances where a breach of compulsory schooling orders occurs further action may be taken against a parent in the Local Court. The result of court action can be the imposition of a community service order or a fine.

What age can my child leave school?

All New South Wales students must complete Year 10 or its equivalent. After Year 10, and up until they reach 17 years of age, there are a range of flexible options for students to complete their schooling.

Working in Partnership

The Department of Education and Communities recognises that working collaboratively with students and their families is the best way to support the regular attendance of students at school.

We look forward to working in partnership with you to support your child to fulfil their life opportunities.

If a student misses as little as 8 days in a school term, by the end of primary school they'll have missed over a year of school.

Further information regarding school attendance can be obtained from the following websites:

Policy, information and brochures:

Please visit the Department of Education's *Policy library*

The school leaving age:

Please visit the Department of Education's *Wellbeing and Learning* website

Do you need an interpreter?

Interpreting services are available on request, including for the hearing impaired. The Telephone Interpreter Service is available 24 hours a day, seven days a week on 131 450. You will not be charged for this service.

For further advice and questions contact your educational services team

T 131 536

Learning and Engagement

Student Engagement & Interagency Partnerships

T 9244 512

www.dec.nsw.gov.au

© February 2015

NSW Department of Education and Communities

COMMUNITY ITEMS

NOTICE

ITEMS FOR PUBLICATION

Items for publication in the school newsletter need to be submitted to the school (via email or in person) by 4pm Wednesday, prior to publication. This will ensure items are included in the next newsletter.

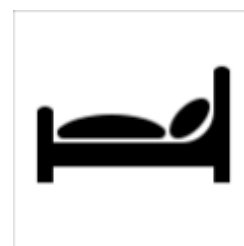
Phone - 02 6995 1108 Email - ivanhoe-c.school@det.nsw.edu.au

Due to large numbers of community advertisements coming into the school to be added to the newsletter, the cost is escalating. We would like to continue to produce large and colourful copies but to make this possible we will need to charge a fee for each advertisement.

\$20 a month or \$5 per ad as a one off.

Community Notices are accepted in good faith and at the discretion of the Principal.

Accommodation in Hay



Stay in a house or apartment when coming to Hay for the price of a motel room. A choice of three centrally located fully serviced houses.

River Lodge 1 in Moppett St: 3 bedrooms – Sleeps 5;

River Lodge 2 in Moppett St: 3 bedrooms – Sleeps 4;

Apartment on Pine in Pine St: 2 bedrooms – sleeps 5.



Look on Air BnB under Hay, for photos and reviews. \$135 per night for two guests and \$20 per night for each additional guest if booked through Therese.

Ph 0432 692 193 or email tjmurphy7@hotmail.com

THANK-YOU FROM THE PIG COMP

I'D LIKE TO THANK EVERYONE THAT ENTERED THIS YEARS COMP. 51 TEAMS ENTERED WITH 31 TEAMS WEIGHING IN. IT WAS THE MOST TEAMS, MOST PIGS, HEAVIEST WEIGHT AND THE BIGGEST PIGS WE HAVE SEEN SINCE WE STARTED THE IVANHOE PIG COMP IN 2016.

EVERYONE ENJOYED THEMSELVES FROM ALL THE FEED BACK I HAVE RECEIVED. WE ARE STILL LEARNING AND WILL BE MAKING A FEW CHANGES IN REGARDS TO HOW MANY PIGS ONE TEAM CAN HAVE IN THE TOP 10.

WITH THE RIVER BOYS AND THE VALLEY BIGFOOTS HAVING 9 IN THE TOP 10 BETWEEN THEM, WE NEVER THOUGHT THAT ONE TEAM WOULD HAVE A CRACKER OF A WEEKEND AND IT TURNS OUT THAT TWO OF THEM DID.

SPECIAL THANKS TO LAURIE SANDFORD WHO HAS BEEN A GREAT SPONSOR SINCE THE FIRST COMP. OPTIC HUNTING GEAR HAVE BEEN UNREAL TO US ALSO SINCE DAY ONE ALONG WITH HUNT & HOOK. THANKS TO ALL THE SPONSORS FOR THIS YEAR AND HOPEFULLY YOU WILL JUMP ON BOARD AGAIN NEXT YEAR.

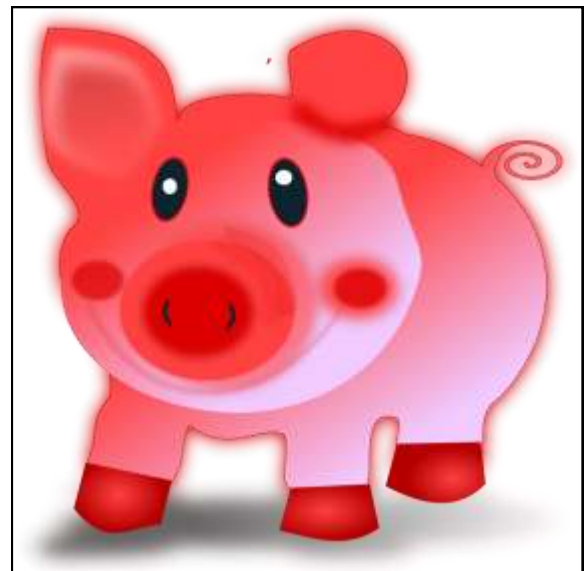
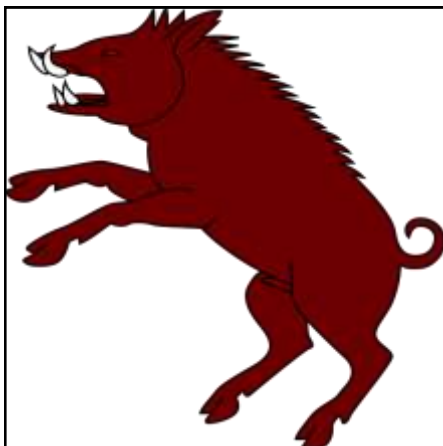
A BIG THANKS TO BEN, STACEY AND JIMMY FOR WEIGHING THE PIGS IN ALL DAY. BEN FOR THE USE OF HIS TRAILER TO DISPOSE OF THE PIGS AND DAVE REES FOR THE USE OF HIS BOB CAT AND DRIVING IT ALL DAY, VERY MUCH APPRECIATED.

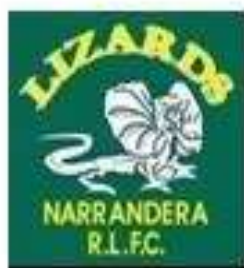
THANKS TO JARED BURKE FOR HIS HELP WITH THE PRESENTATION AND RAFFLES. YOUR INPUT HAS BEEN GREAT AND HOPEFULLY WILL MAKE NEXT YEAR BIGGER AND BETTER.

AFTER THE EXPENSES OF THE WEEKEND WE MADE CLOSE TO \$7000 FROM THE DAY. WE WILL BE DONATING \$2200 TO THE BLACK DOG RIDE, \$500 TO THE RODEO AND GYMKHANA AND \$500 TO THE IVANHOE FOOTBALL CLUB. THIS WILL LEAVE A BIT IN THE KITTY FOR NEXT YEAR.

HOPEFULLY WE CAN GET A FEW MORE FARMERS ON BOARD NEXT YEAR WITH SOME SPONSORSHIP. OVER 1000 PIGS HAVE BEEN CAUGHT OVER THE LAST 3 PIG COMPS WE HAVE HELD WHICH WOULD HAVE HELPED TO CONTROL FERAL PIGS TO SOME EXTENT.

THANKS UNTIL NEXT YEAR
JOSH ROBERTSON





ProTen

COMMUNITY CUP 2018



ROUND 2

SATURDAY 16TH JUNE 2018

NARRANDERA SPORTS GROUND

GAME 1- 2PM
GOOLGOWI VS BARELLAN

GAME 2- 3:30PM
HILLSTON VS IVANHOE

GAME 3- 5PM
NARRANDERA VS RANKINS SPRINGS

CANTEEN & BAR
FACILITIES AVAILABLE

\$5 ENTRY FEE
UNDER 16'S FREE

AFTER GAMES HEAD BACK TO NARRANDERA
BOWLING CLUB FOR PRESENTATION OF AWARDS



NARRANDERA EXHAUST &
TYRE CENTRE - 69594594





Come along and support the Ivanhoe Roosters. Please note that this year's home game will be in Hillston due to the condition of our ground. This will be on the 7th July Round 5.



PROTEN COMMUNITY CUP RUGBY LEAGUE 2018 COMPETITION DRAW

KNOCKOUT – 19TH MAY

HOST – **BARELLAN**

Please note change of times
for round 1 on previous page

ROUND 1 – 2ND JUNE

HOST – **HILLSTON**

ROUND 4 – 30TH JUNE

HOST – **RANKINS SPRINGS**

Narrandera v Goolgowi	3.00pm
Ivanhoe v Barellan	4.30pm
Hillston v Rankins Springs	6.00pm

Hillston v Barellan	12.00pm
Narrandera v Ivanhoe	1.30pm
Rankins Springs v Goolgowi	3.00pm

***GENERAL BYE LONG WEEKEND –
/9TH/10TH/11TH JUNE**

ROUND 2 – 16TH JUNE

HOST – **NARRANDERA**

ROUND 5 – 7TH JULY

HOST – **IVANHOE**

(ALL GAMES WILL BE PLAYED AT
HILLSTON)

Goolgowi v Barellan	2.00pm
Hillston v Ivanhoe	3.30pm
Narrandera v Rankins Springs	5.00pm

Narrandera v Hillston	3.00pm
Rankins Springs v Barellan	4.30pm
Ivanhoe v Goolgowi	6.00pm

ROUND 3 – 23RD JUNE

HOST – **GOOLGOWI**

SEMI-FINALS – 14TH July

HOST – 1ST PLACED TEAM'S
HOME GROUND

Rankins Springs v Ivanhoe	12.00pm
Narrandera v Barellan	1.30pm
Goolgowi v Hillston	3.00pm

2 ND V 3 RD	1.30pm
1 ST V 4 TH	3.00pm

GRAND FINAL – 21ST July

HOST – TBC

WINNER SEMI 1 V WINNER SEMI 2	3.00pm
----------------------------------	--------

LIVEBETTER **IVANHOE COMMUNITY TRANSPORT**



THE NEXT TRIP IS TO GRIFFITH ON FRIDAY 22ND JUNE

LEAVING AT 7.00AM
Cost is \$15 per person

Why not have a trip out of town for a day 😊

Phone 0429 951237 or book a seat at least 2 days before trip at the Ivanhoe MSO Office. The bus will pick up from your home. Please be ready as the bus cannot wait. Pick up starts at 7.00am
**Our Community Transport is provided by Transport for NSW through
LIVEBETTER COMMUNITY SERVICES**

We offer transport services to appointments both in and out of town. These can include Doctors, Dentist, Rehabilitation, Pathologist, X-rays, Specialist, Hearing and Eye Clinics as well as other medical and non medical appointments such as shopping and social inclusion.



IVANHOE HEALTH SERVICE CLINIC DATES

**18th June –RFDS Clinic Doctor
Practice Nurse
Mental Health
Dermatologist**

22nd June –RFDS Clinic Doctor

**25th –RFDS Clinic Doctor
Drug and Alcohol**

**29th June –RFDS Clinic Doctor
Child and Family Mental Health**

for clinic appointments

Please phone 02 6990 2200

Monday to Friday

between 8.30am & 5.00pm

After hours please ring Healthdirect 1800 022 222

**For emergencies Ring
000**